

UNINCORPORATED HILLSBOROUGH COUNTY CELLULAR TOWER LOCATION MAP





Hillsborough County,
Florida




601 E Kennedy Blvd
Tampa, FL 33602
(813) 272-5810
printroom@hillsboroughcounty.org

Legend

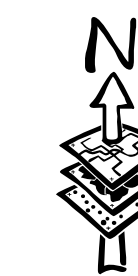
Cell Towers

-  Approved
-  Pending

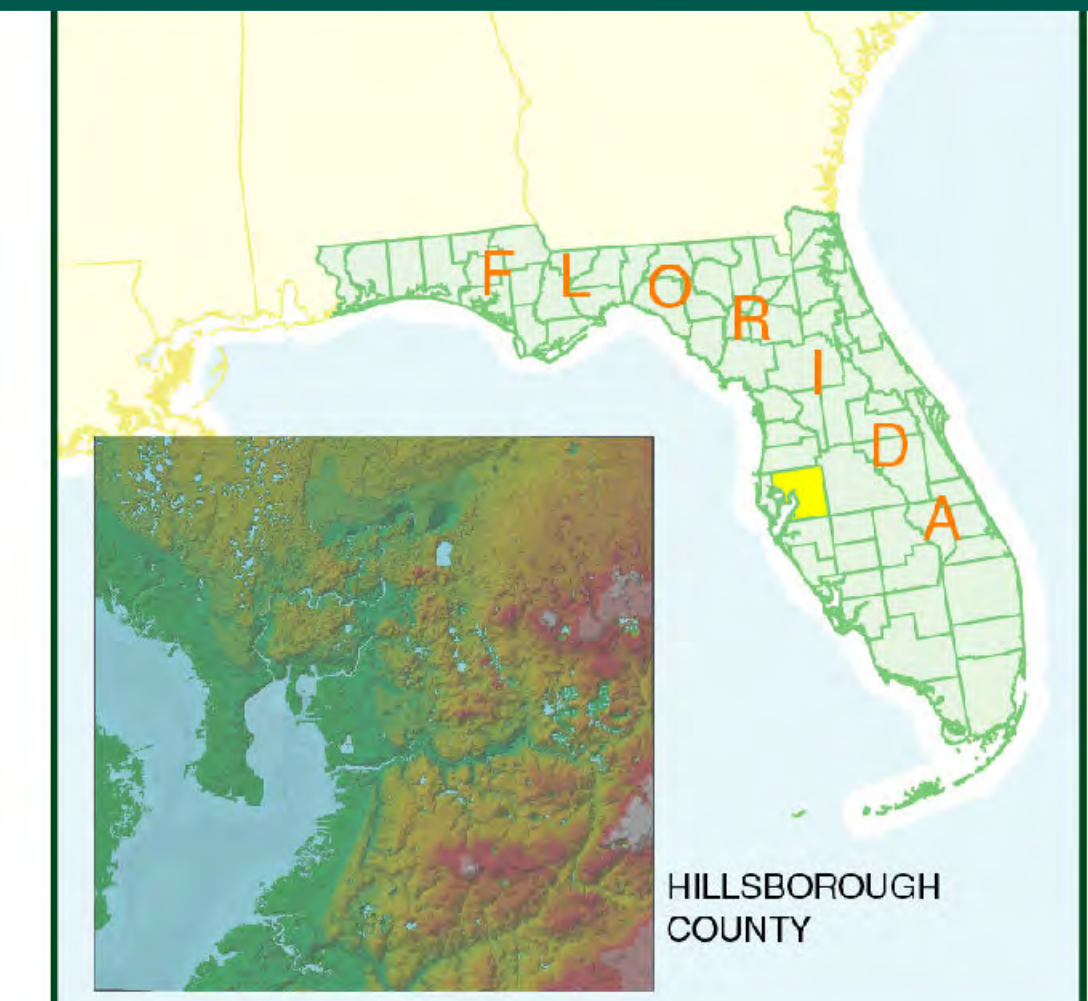
Other Features:

-  Cities
-  Water
-  Urban Service Area Boundary

* Cellular Tower permits are approved via the Administrative or Zoning Hearing Meeting process. See supplemental document referencing map number, approval number, folio number and status.



Locator Map



Cell Towers

NOTE: Every reasonable effort has been made to assure the accuracy of this map. Hillsborough County does not assume any liability arising from use of this map. THIS MAP IS PROVIDED WITHOUT WARRANTY OF ANY KIND, either expressed or implied, including, but not limited to, the implied warranties of merchantability and fitness for a particular purpose.

SOURCE: This map has been prepared for the inventory of real property found within Hillsborough County and is compiled from recorded deeds, plats, and other public records; it has been based on BEST AVAILABLE data.

Users of this map are hereby notified that the aforementioned public primary information sources should be consulted for verification of the information contained on this map.

Author: Ralph E. Spaight
File Name: ...Proj\CellTowers\Celltowers_EL.mxd
Date: February 2, 2012

