

COMMUNITY-BASED PLANNING AREAS



Hillsborough County,
Florida

Office of the County Administrator
Michael S. Merrill

Real Estate Department
Geomatics Division
GIS SECTION

601 E. Kennedy Blvd.
Tampa, FL 33601-1110

Contact:
Ralph Spaight
Sr GIS Analyst
(813) 276-8325
spaightrs@hillsboroughcounty.org

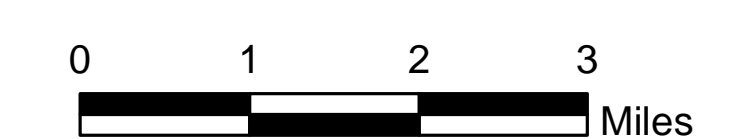
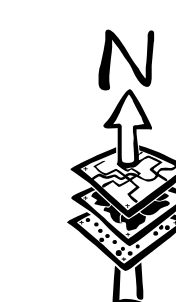
Legend

Adopted Community-Based Planning Areas:

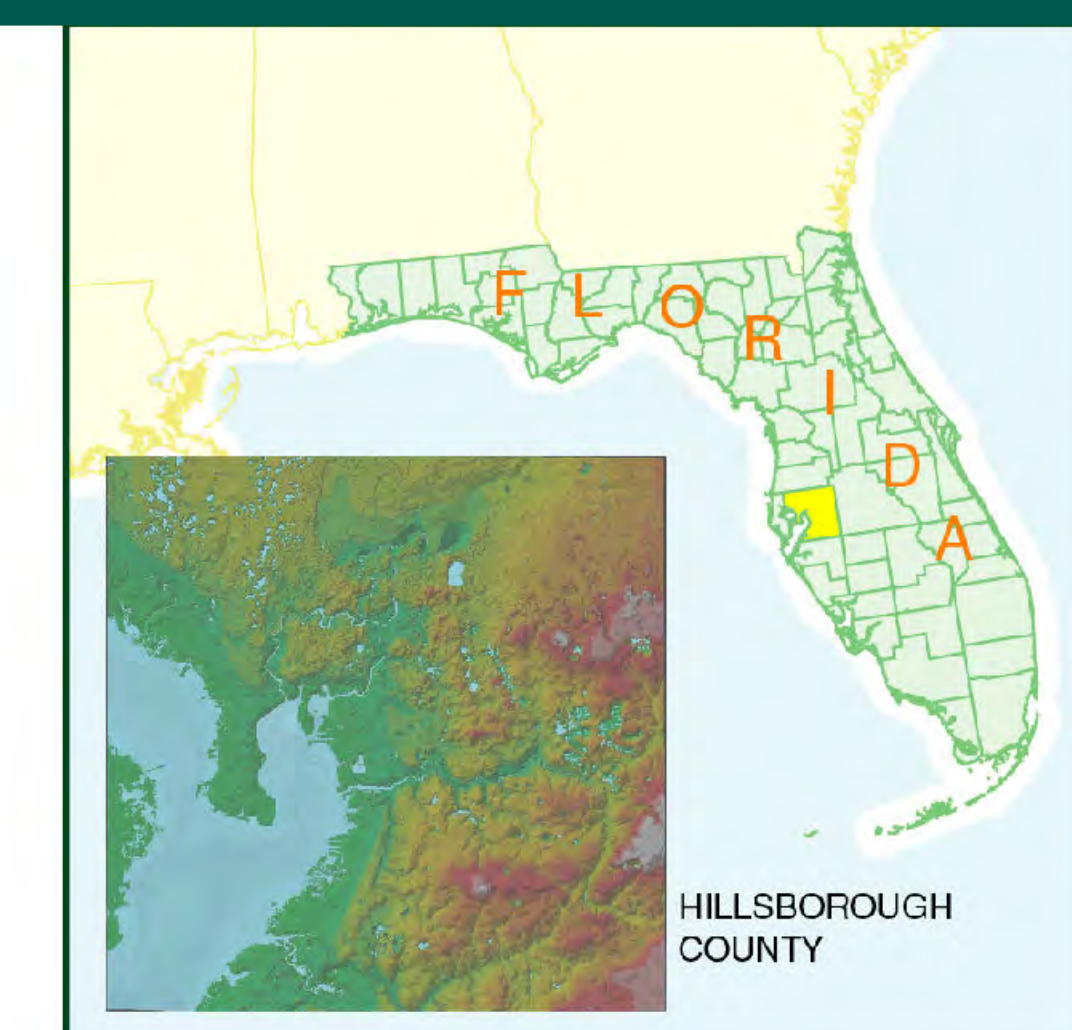
- Apollo Beach Community Plan
- Brandon Community Plan
- Brandon Main Street
- Citrus Park Village
- East Lake - Orient Park Community Plan
- Gibsonton Community Plan
- Greater Carrollwood-Northdale Communities Plan
- Greater Palm River Community Plan
- Keystone-Odesa Community Plan
- Keystone-Lutz Overlap
- Little Manatee South Community Plan
- Lutz Community Plan
- Northwest Hillsborough Community Plan
- Riverview Community Plan
- Ruskin Community Plan
- Sefner-Mango Community Plan
- Sun City Center Community Plan
- Thonotosassa Community Plan
- Town N Country Community Plan
- Town N Country Focus Area
- University Area Community Plan
- Wimauma Community Plan

Other Features:

- Cities
- Water
- Urban Service Area Boundary



Locator Map



Community-Based Planning

NOTE: Every reasonable effort has been made to assure the accuracy of this map. Hillsborough County does not assume any liability arising from use of this map. THIS MAP IS PROVIDED WITHOUT WARRANTY OF ANY KIND, either expressed or implied, including, but not limited to, the implied warranties of merchantability and fitness for a particular purpose.

SOURCE: This map has been prepared for the inventory of real property found within Hillsborough County and is compiled from recorded deeds, plats, and other public records; it has been based on BEST AVAILABLE data.

Users of this map are hereby notified that the aforementioned public primary information sources should be consulted for verification of the information contained on this map.

Author: Ralph E. Spaight
Path: F:\Real_Est\Groups\RealGIS\.....\ File Name: CBPs_EL.mxd
Date: September 2011

