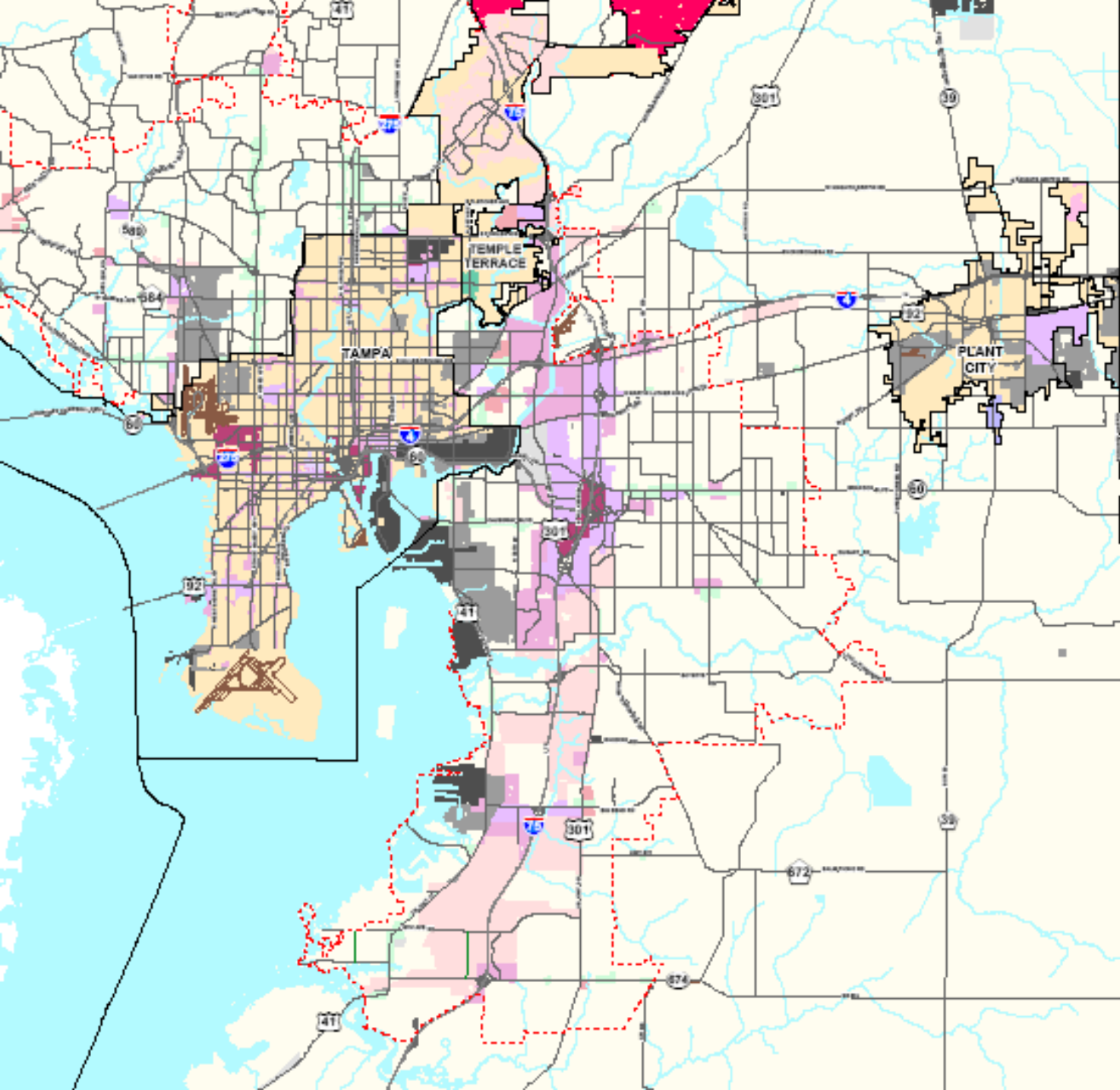


# **Economic Stimulus Task Force: Land Use Analysis**

**Heather L. Lamboy, AICP**



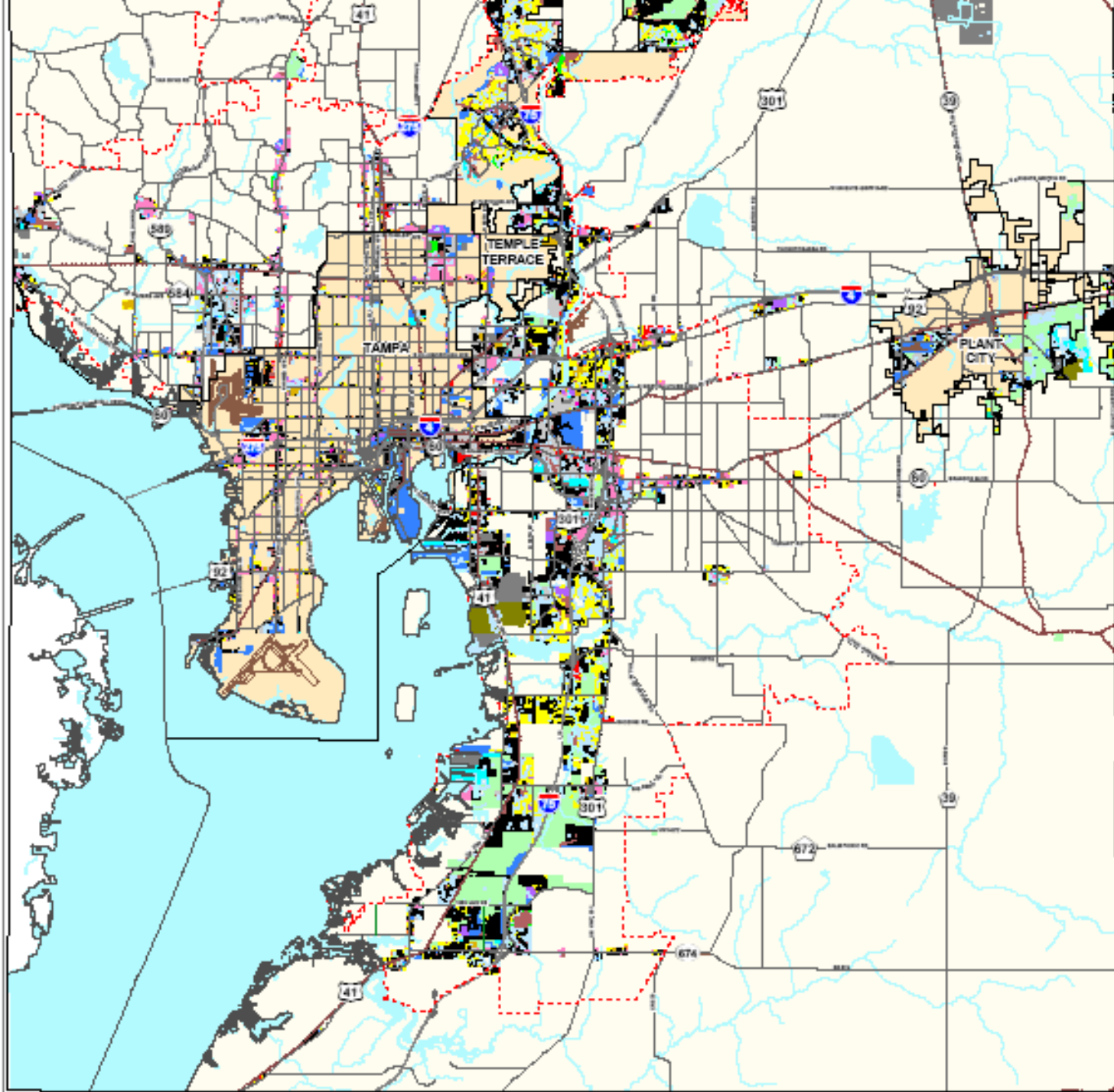
- Urban Service Boundary
- City
- Unincorporated County

- Unincorporated Hillsborough County FLU**
- Suburban Mixed Use-6 (17020,1595 Acres)
  - Community Mixed Use-12 (10242,9455 Acres)
  - Urban Mixed Use-20 (6076,8901 Acres)
  - Regional Mixed Use-35 (1205,0745 Acres)
  - Light Industrial - Refined (637,4245 Acres)
  - Heavy Industrial (4705,3645 Acres)
  - Research Corporate Park (837,4245 Acres)
  - Office Commercial-20 (5244,5469 Acres)
- Temple Terrace FLU**
- Research Corporate Park (293,5975 Acres)
  - Urban Mixed Use-20 (201,6202 Acres)
  - Downtown Mixed Use-25 (216,6067 Acres)
- Plant City FLU**
- Mixed Use - Residential/Commercial (210,918 Acres)
  - Mixed Use - Residential/Commercial/Industrial (1396,5492 Acres)
  - Mixed Use - Gateway (290,6705 Acres)
  - Industrial (3644,7515 Acres)
- Tampa FLU**
- Suburban Mixed Use-3 (3335,1211 Acres)
  - Suburban Mixed Use-6 (4799,970 Acres)
  - General Mixed-Use-24 (54,9682 Acres)
  - Urban Mixed Use-30 (901,6371 Acres)
  - Community Mixed Use-35 (2174,3125 Acres)
  - Regional Mixed-Use-100 (1999,1299 Acres)
  - Light Industrial (1754,6732 Acres)
  - Heavy Industrial (3353,0685 Acres)

REFERENCE INFORMATION



Existing Land Use within  
Industrial and Mixed Use  
Future Land Use Categories



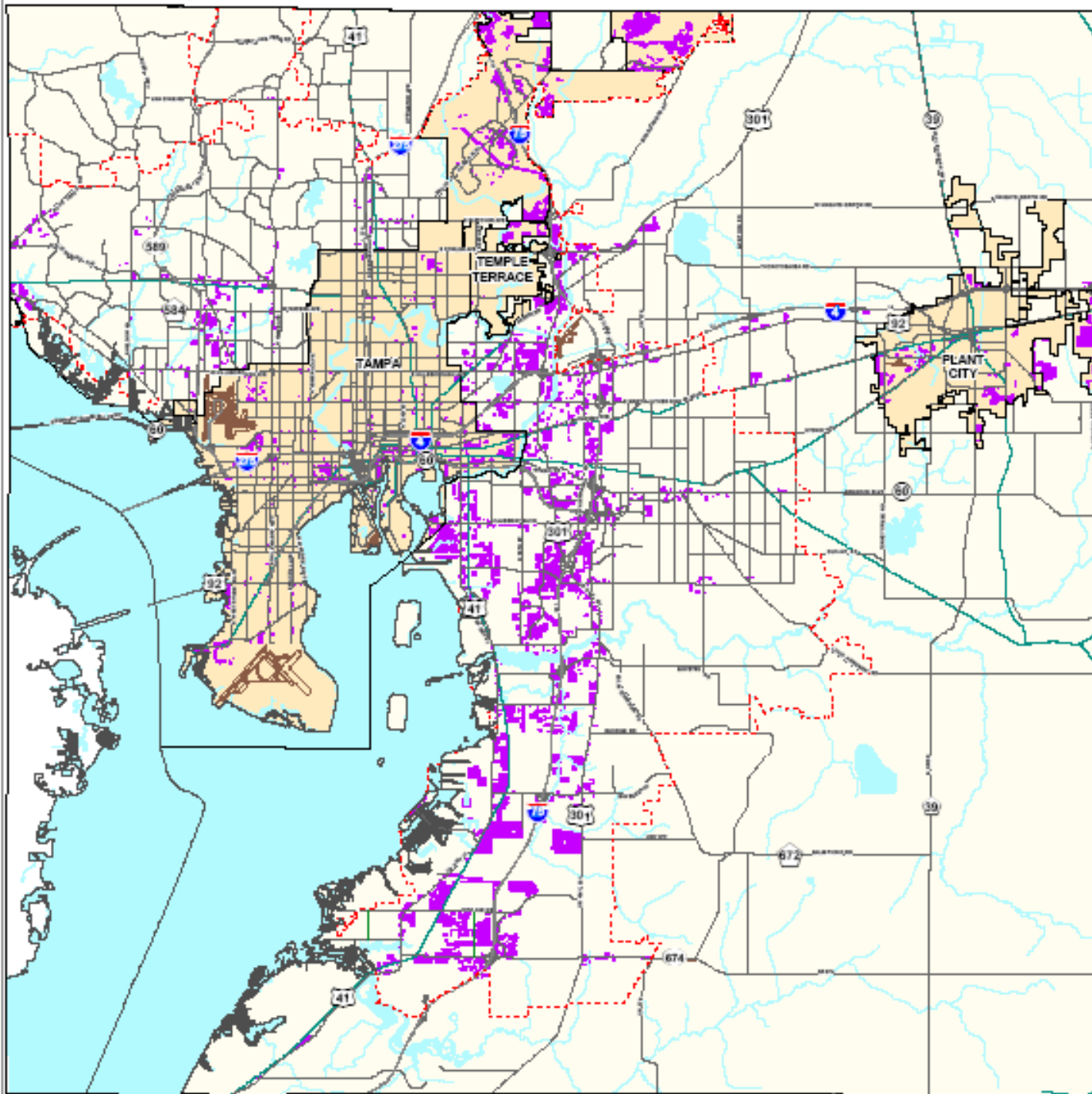
- Urban Service Boundary
- City
- Unincorporated County
- Single Family / Mobile Home (7463,424 Acres)
- Two Family (56,833 Acres)
- Multi-Family (5502,350 Acres)
- Mobile Home Park (302,303 Acres)
- Vacant (11039,700 Acres)
- Public / Quasipublic / Institutions (6703,185 Acres)
- Public Communications / Utilities (1404,934 Acres)
- Right of Way / Roads / Highways (752,064 Acres)
- Educational (777,539 Acres)
- Heavy Commercial (1039,434 Acres)
- Light Commercial (7851,828 Acres)
- Heavy Industrial (4901,192 Acres)
- Light Industrial (8811,790 Acres)
- Mining (1079,140 Acres)
- Recreation / Open Space (448,758 Acres)
- Agriculture (12525,869 Acres)
- Natural (42,863 Acres)
- Water (2775,500 Acres)
- Unknown (16,280 Acres)
- Not Classified (8189,440 Acres)
- Major Railroads

REFERENCE INFORMATION



Economic Development Stimulus  
Task Force  
Vacant Land within  
Industrial and Mixed Use  
Future Land Use Categories

1/2011



- Urban Service Boundary
- City
- Unincorporated County
- Vacant (11,839,787 Acres)
- Major Railroads

REFERENCE INFORMATION

